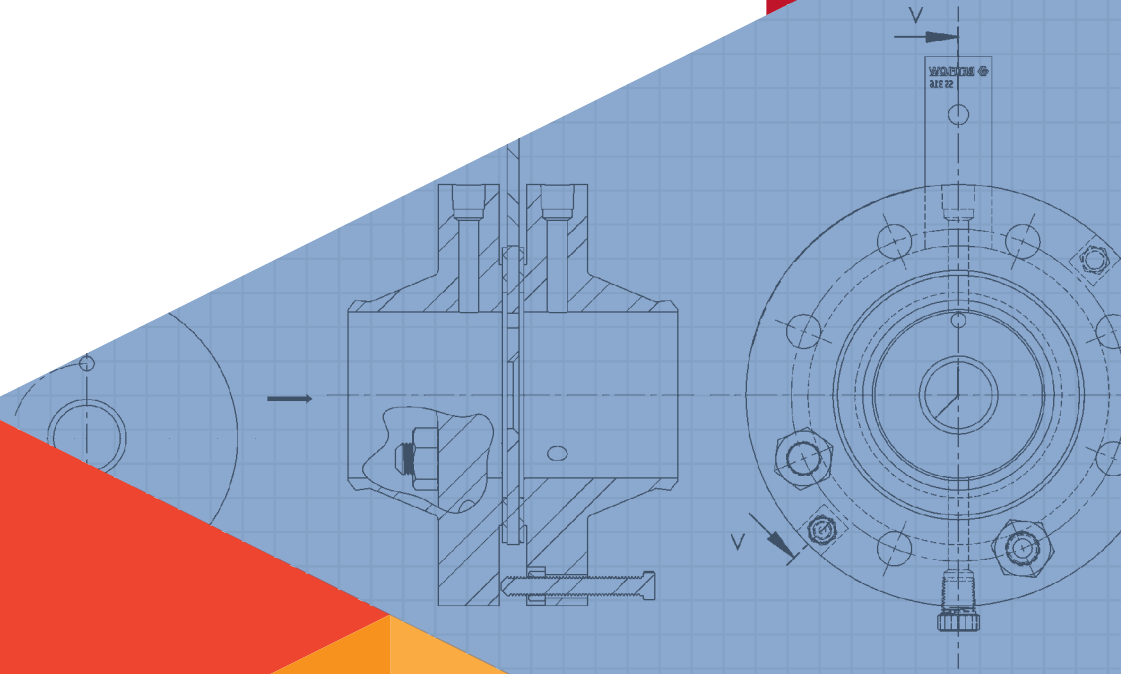




Engineering Technologies Pvt. Ltd.

*Manufacturer & Exporter of
Precision & Reliability
driven Engineering Solutions*



About us

Incorporated in 2009 with a prime objective of providing latest **technological products and solutions** in the field of Process & Factory Automation. Ever since the inception, the company's aim has been to build a world-class corporate group that is truly competitive in the global market place. Today, Bhavyam is one of the established and well accepted brand in Process & Factory Automation market.

"Innovation through Knowledge and Technology" is the way of working at Bhavyam Engineering Technologies Private Limited.

Engineering expertise, Product / Industry knowledge, Integrated Solution Design and Robust Processes are the key pillars of our success in past 13+ years. We offer performance monitoring solution to various industrial sectors like Power Generation, Cement, Food & Pharmaceutical, Mining, Sugar, Oil & Gas, Water / Waste Water, Paper industries which drives nation's growth. Combining superior technology products with Pre-sales / After sales services and Project management, Bhavyam delivers products to achieve safety, quality and reliability.

To strengthen our product basket and to enhance market reach, we have established our state-of-the-art production facility at Shirwal near Pune. This facility is equipped with modern range of CNC / VMC machines supported by in-house material testing facility and globally recognized flow products design software.



*Trust, Integrity,
Respect, Ethical
Business practices
and Freedom of
Expression are the
key behavioural
features of Team
Bhavyam to achieve
growth for all stake
holders.*



Bhavyam Team

The company is driven by qualified & experienced team of Leaders and Professionals in the field of Engineering. Through well designed processes various teams like Internal, External Sales, Marketing, Order Management, Manufacturing, Product Design, Services, HR, Administration, Accounts, Finance, Taxation, Logistics are providing seamless services to our Internal as well as External Customers.



Our Ethos



Quality Policy

Comprehensive quality management procedures are employed in all areas of operation such as Sales, Marketing, Order Processing, Production, Accounts & Finance, Logistics, and Training etc. We will satisfy our customers through Quality Products, Quality Transactions, Quality Service. We are committed to achieve this by Increased Customer Interactions, Understanding Customer Requirements, Continuous Improvement in People, Process & Products, Ethical Business Practices.



Our Mission

Internally, we are committed to provide an informal yet professional working environment that encourages and rewards creativity, insight, teamwork and enthusiasm. Externally, we help our clients achieve their most ambitious business goals and strategic objectives. We deliver the highest levels of professionalism and experience to provide strategic engineering needs, creative solutions and timely, responsive services



Our Values

We add value by striving to understand our customers engineering requirements to enable us to deliver reliable solutions to meet strategic business goals



Our Vision

We strive to be the leading and trusted business associates, in the field of Engineering through highest level of customer satisfaction.



Bhavyam's BETFLOW range of flow elements with flange assembly are designed and engineered as per global industrial standards to meet challenging process demands.

Manufacturing all flow metering solutions as per ISO 5167 / BS-1042 1981 / API 2530 / AGA REPORT 3 & R. W. MILLER STANDARDS



Orifice Assembly

Types of Orifice:

- Square edge
- Eccentric
- Segmental
- Quadrant edge
- Conical Entrance
- Restriction orifice

MOC for Orifice Plates:

- SS304
- SS316
- Hastelloy-C
- Monel
- Inconel
- Special Alloys

Line Sizes: 1 Inch to 24 Inch

Type of Flanges:

- Weld neck (WNRF)
- Slip on (SORF)

MOC for Flanges:

- Carbon Steel / Stainless Steel



CONVAL
by F.I.R.S.T.

Flow elements are designed using globally recognized software CONVAL 11



Averaging Pitot Tubes

- Ideal flow measurement for large size ducts. Easy installation and less expensive
- Extremely low permanent pressure loss
- Suitable for various type of circular, Square and Rectangular pipes / ducts

Line Sizes: 2 Inch to 48 Inch

MOC for Probes:

- SS 304
- SS 316
- Duplex SS
- Hastelloy-C
- Monel
- Inconel
- Diamond shaped sensor in forged construction enables perfect velocity and flow distribution
- High repeatability of measurement
- Aerodynamic design avoids cavitation and flushing of the media. No moving parts





Venturi Flow Sensor

- Ideal flow measurement where low permanent pressure loss is desired
- Suitable for various types of non-viscous liquids / Slurry / Steam / Gas and Air

MOC for Venturi:

- SS 304
- SS 316
- Special Alloys

Line Sizes: 2 Inch to 48 Inch.

- Venturi design as per ISO 5167 / BS-1042 1981 / API 2530 & R. W. MILLER standards
- Venturi is designed using globally recognised software – CONVAL 11

- Fabricated / Machined convergent section with flanged end or welded end
- PMI test / IBR certification as required

CONVAL has extensive calculation options, Proven practices according to DIN, VDI, VDMA EN/ISO or ISA, ASME, API etc.



Flow Nozzles

- Ideal flow measurement for High pressure, High velocity application
- long-term stability and reliability in flow measurement where cavitation or erosion can damage the other flow metering elements like orifice plates

MOC for Nozzles:

- SS 304
- SS 316
- Carbon Steel
- Special Alloys

Line Sizes: 2 Inch to 48 Inch

Types of Flow Nozzles:

Flange / Weld in / handling Ring

Types of End Connection:

Flanged end / Socket welded / Butt welded



- Extended product life due to rounded inlets and no moving parts
- Venturi is designed using globally recognised software – CONVAL 11

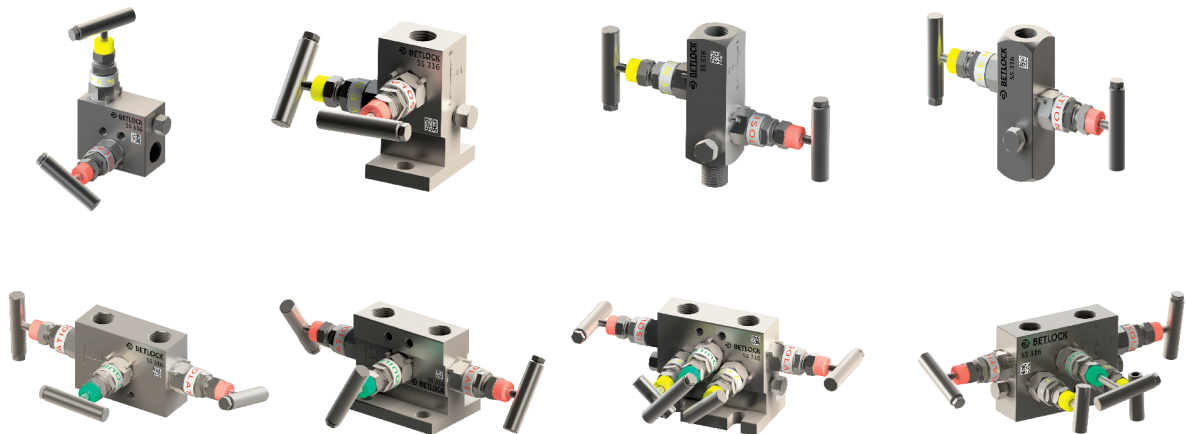


Bhavyam Manufactures wide range of 2 valve / 3 valve / 5 valve instrument manifolds that provides perfect interface between process & measuring instruments.

BETLOCK manifolds are designed to protect & enhance availability of expensive instrumentation investments. The use of comprehensive range of wetted material makes it most suitable for challenging processes which includes Power / Chemical / Petrochemicals / Oil and Gas etc.



Instrument Manifolds:



Technical Specification:

Types:

2 Valve Manifold
3 valve Manifold
5 Valve Manifold

Configuration:

Integral Mounting (Block & bleed / T-Type, H-Type, Coplanar / vertical flange design)
Remote Mounting (Pipe to Pipe - NPT-F)

Body Material:

Stainless Steel (SS 304, SS 316, SS 316 L), Duplex Stainless Steel, Hastelloy-C, Titanium, Monel, Carbon Steel

Process / Instrument Connection:

1/2" NPT (M/F), 1/2" BSP (M/F), Flanged according to IEC 61518/B / DIN 19213

Gland Packing:

Standard PTFE, Graphoil, PEEK

Seat MOC:

Same as Body Material, Soft Seat PTFE, Soft Seat PEEK

Drain / Vent Valve:

1/4" NPT (F) with Body MOC Plug,
1/4" NPT (F) without Plug

Features:

Single piece forging construction provides maximum strength

Pressure Rating - 400 Barg (6000 PSI)

Optional seat material available with PTFE and PEEK

PMI test certificate provided with manifold supply

Self rotating ball spindle provides 100% leak proof

Supplied with variety of MOC for Body, Stem, Trim, Glands etc

Low torque T bar handle provides ease of operation

Dust cap provided to protect gland seal from dust & ingress of contaminants

All manifolds are with 100% factory tested with certified test setup



Bhavyam's BETFITT range of products covers all types of instrumentations fittings like, Flanges / Thermowell / Flushing Ring / Grounding Ring / Siphon / Different types of Adapters / Needle valves required for instrumentation products.



Process Flanges

Technical Specification:

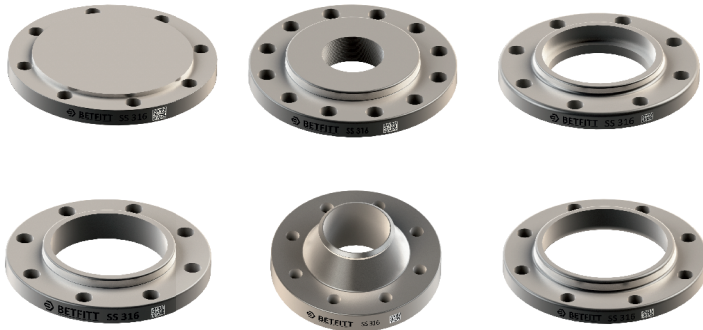
As per ASME / ANSI, AFNOR, DIN, EN, BS, JIS, AWWA, MSSP Standards.

Types of Flanges: Welding Neck Flange, Slip-on Flange, Blind Flange, Socket Weld Flange, Lap Joint Flange, Threaded Flange

MOC for Flanges -
SS 304 / SS 316 / Hastelloy-C
Monel / CS / PTFE / PEEK

Size Range:
Flanges ½" to 36" (10 mm to 900 mm)

Pressure Class:
150, 300, 400, 600, 900, 1500, 2500



Thermowells

Technical Specification:

Instrument Connection: ½" / ¾" / 1"

MOC - Carbon Steel / SS 304 / SS 316
Hastelloy C / Monel / Inconel / Super Duplex

Process Connection:
Flanges / Threaded / Welded Tri-Clamp.
Straight / Tapered / Stepped
type thermowell available

- Thermowells are designed using CONVAL 11 software
- Weight frequency calculation provided
- PMI certificate / UT / RT / IBR certification available as per requirement



Fittings

Technical Specification:

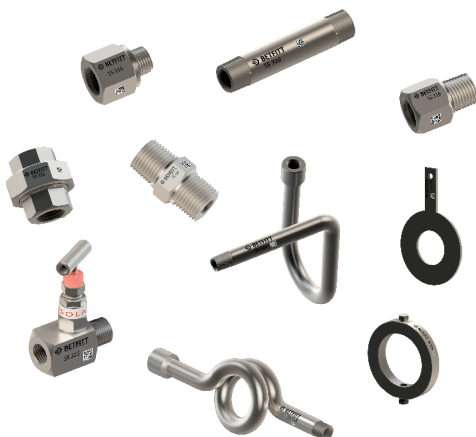
Products:
Flushing Ring / Grounding Ring / Siphon / Needle Valve / Union Nipple and Different types of Adapters

MOC:
Carbon Steel / SS 304 / SS 316 / Hastelloy-C / Super Duplex / Monel / Inconel

Connection: As per process requirements

Pressure Rating: 300 Bar g (4500 PSI)

- PMI certificate / UT / RT / IBR certification available as per requirement





SERVICE is one of the key differentiator for Bhavyam. Strategically, we have positioned “BHAVYAM” as one of the best Service Provider in Process & Factory Automation industry. Our prompt and efficient service is the backbone of our success in past more than **13+ years.**

Services

- Pre-Sales Consultancy
- Flow Element / Restriction orifice sizing and selection using CONVAL software
- Material Testing Services (PMI) using Thermo Scientific make XRF Analyser
- Laser Printing services – Tag plates, name plates on Instruments / Panels,
- Laser Printing services with unique QR code on mechanical products
- Sub contracting work for customized machining / mechanical products
- Testing and Calibration services for Process Instruments and Gauges
- Training Services



 **BHAVYAM**

Engineering Technologies Pvt. Ltd.

Office :

S. No. 14, Vadgaon Khurd, Near Dattakrishnai
Mangal Karyalaya, Sinhgad Road
Tal. : Haveli, Dist. : Pune 411 041 (India)

Factory :

I-11/C, Chordia Industrial Park,
Gat No. 458, Village : Dhangarwadi,
Tal. : Khandala, Dist. : Satara 412 801 (India)

Phone : (+91) 020 - 24390224, 24390226 | E-mail : SOM2@bhavyam.com / info@bhavyam.com

Web : www.bhavyam.com | ☎ +91-89566 06830