



RANGE OF MANIFOLDS

PRODUCT DATA SHEET

MANUFACTURER



Engineering Technologies Pvt. Ltd.

For more information



Office / Workshop:

S. No. 14, Vadgaon Khurd,
Near Dattakrishnai Mangal Karyalaya
Sinhgad Road, Tal.: Haveli
Dist.: Pune - 411 041

Factory:

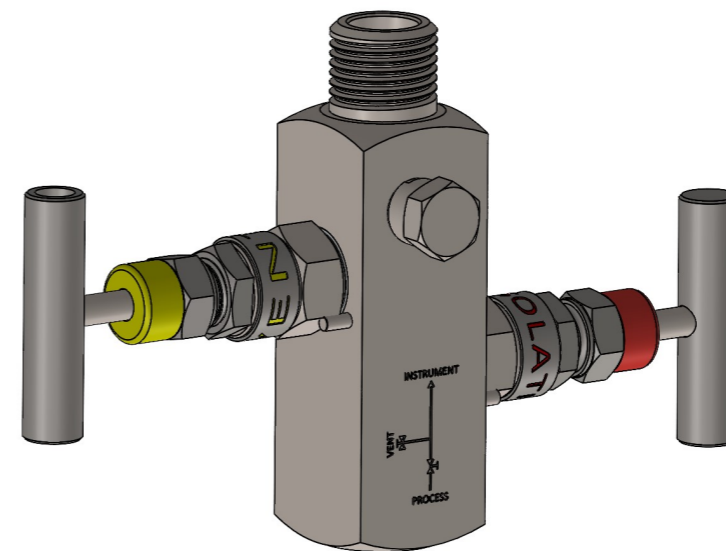
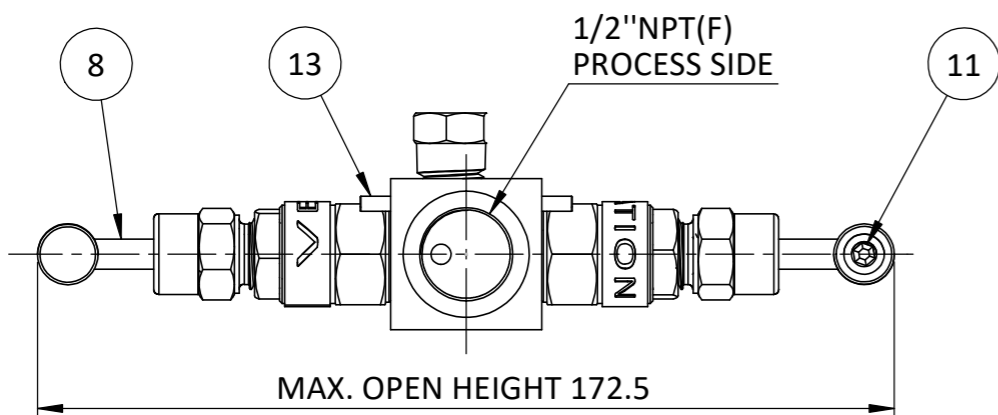
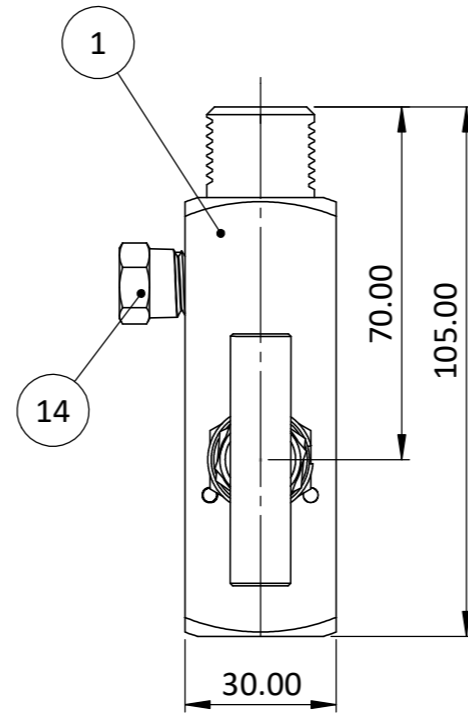
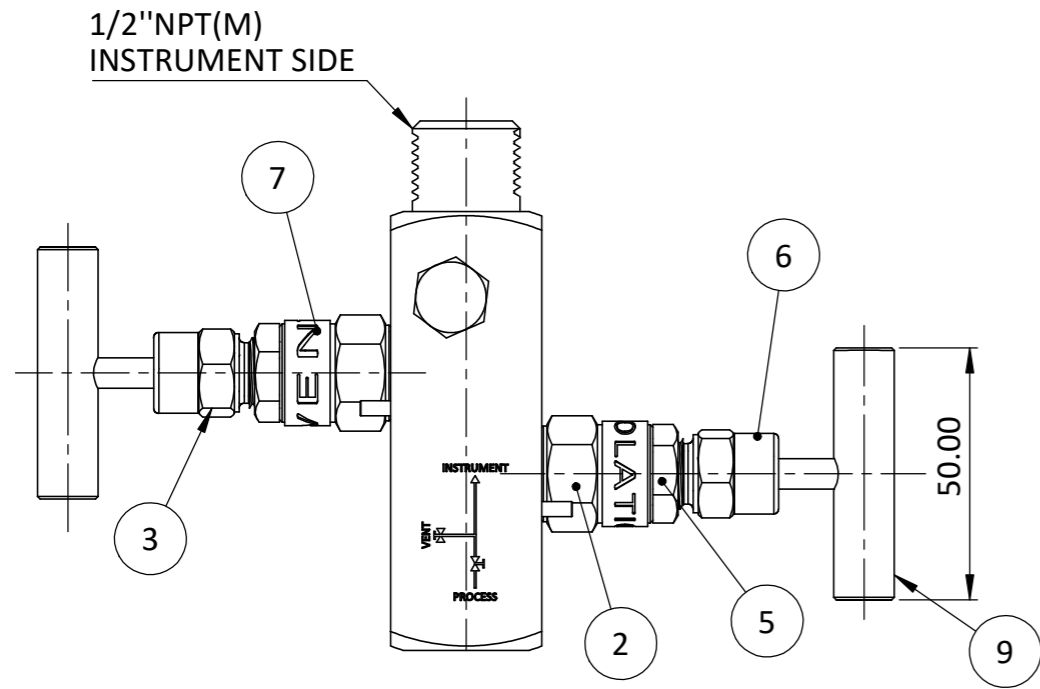
I-11/C, Chordia Industrial Park
Gat No. 458, Village Dhangarwadi
Tal.: Khandala
Dist.: Satara - 412 801

***Manufacturer and Exporter of
Precision & Reliability Driven Engineering Solutions***

Tel.: (+91)-20-24390224 / 24390226 **Mob.:** +91 8956606830

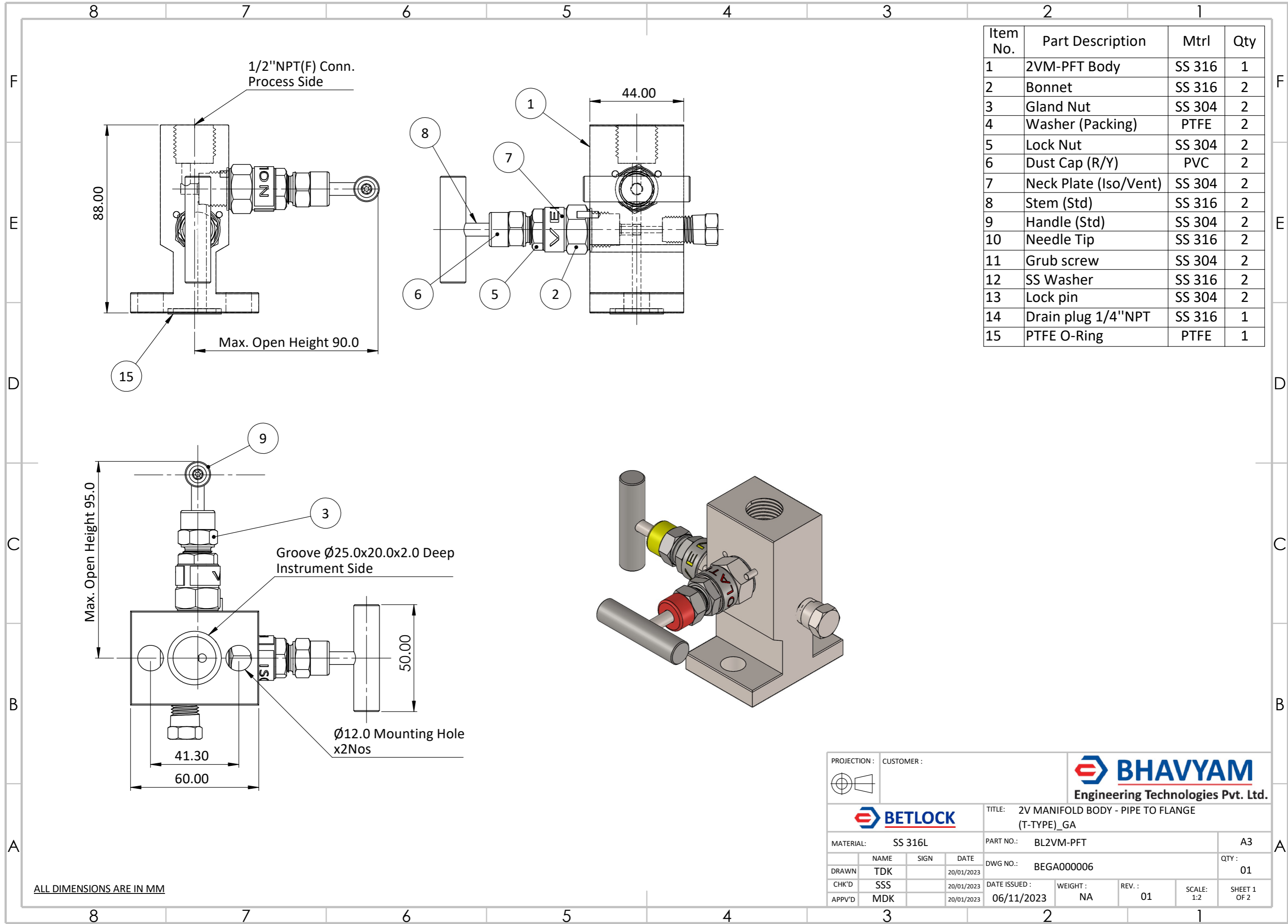
Email.: SOM2@bhavyam.com / betplsales@bhavyam.com

Item No.	Part Description	Mtrl	Qty
1	2VM-BBM Body	SS 316	1
2	Bonnet	SS 316	2
3	Gland Nut	SS 304	2
4	Washer (Seal)	PTFE	2
5	Lock Nut	SS 304	2
6	Dust Cap	PVC	2
7	Neck Plate	SS 304	2
8	Stem	SS 316	2
9	Handle (Std)	SS 304	2
10	Needle Tip	SS 316	2
11	Grub Screw	SS 304	2
12	SS Washer	SS 316	2
13	Lock pin	SS 304	2
14	Drain vent 1/4" NPT	SS 316	1



ALL DIMENSIONS ARE IN MM
DEBURR & BREAK SHARP EDGES

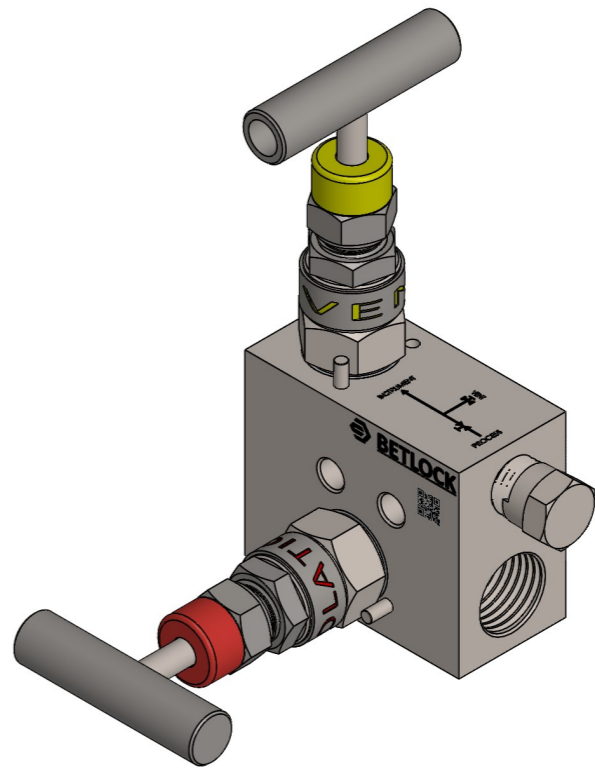
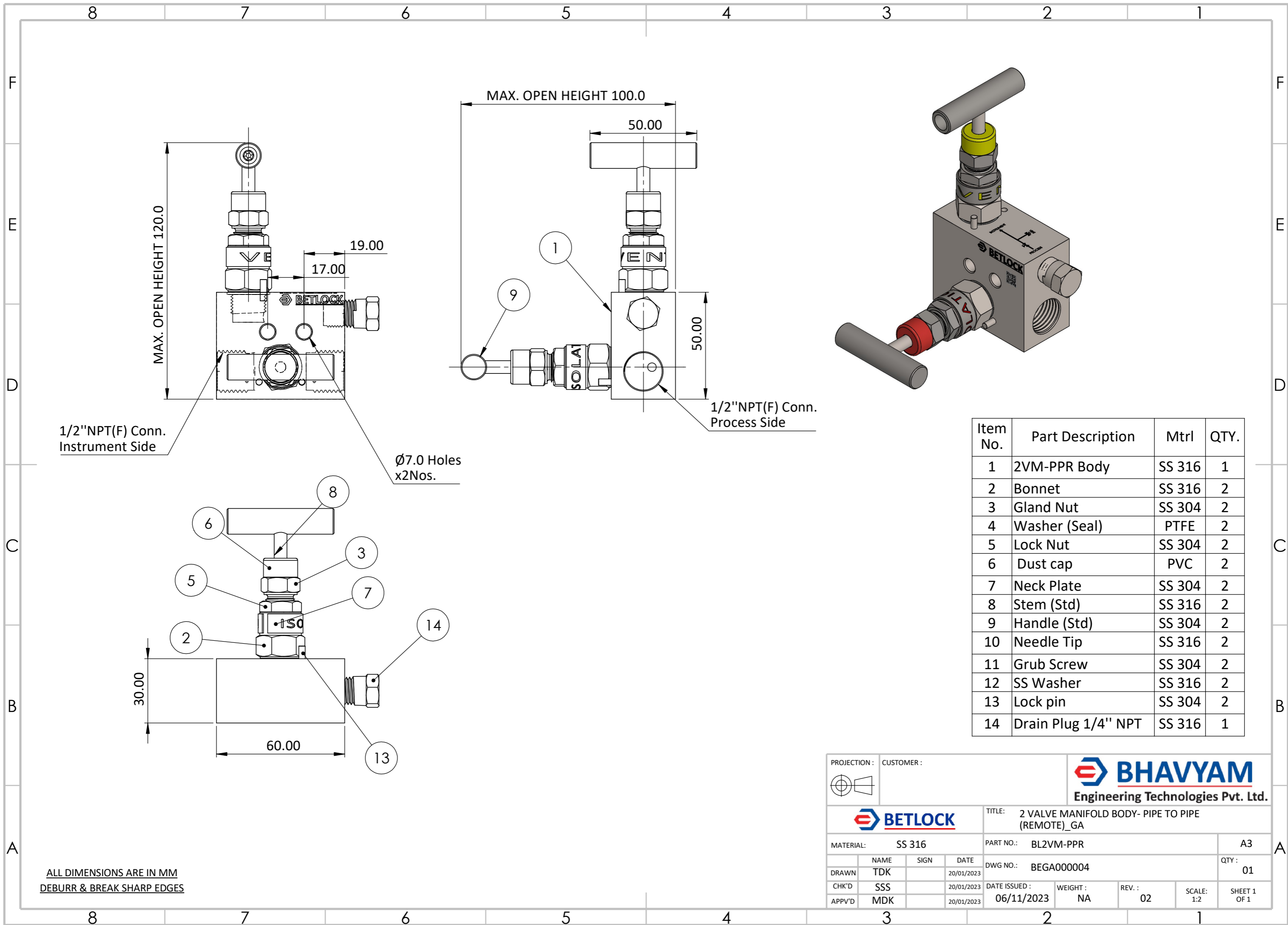
PROJECTION :	CUSTOMER :		
		TITLE: 2V MANIFOLD BODY- BLOCK & BLEED (M-F) _GA	
MATERIAL: SS 316		PART NO.: BL2VM-BBM	A3
NAME	SIGN	DATE	QTY :
DRAWN TDK		20/01/2023	01
CHK'D SSS		20/01/2023	DATE ISSUED :
APPV'D MDK		20/01/2023	06/11/2023
WEIGHT : NA		REV. : 01	SCALE: 1:1
			SHEET 1 OF 2



Item No.	Part Description	Mtrl	Qty
1	2VM-PFT Body	SS 316	1
2	Bonnet	SS 316	2
3	Gland Nut	SS 304	2
4	Washer (Packing)	PTFE	2
5	Lock Nut	SS 304	2
6	Dust Cap (R/Y)	PVC	2
7	Neck Plate (Iso/Vent)	SS 304	2
8	Stem (Std)	SS 316	2
9	Handle (Std)	SS 304	2
10	Needle Tip	SS 316	2
11	Grub screw	SS 304	2
12	SS Washer	SS 316	2
13	Lock pin	SS 304	2
14	Drain plug 1/4"NPT	SS 316	1
15	PTFE O-Ring	PTFE	1

ALL DIMENSIONS ARE IN MM

PROJECTION :	CUSTOMER :	
		TITLE: 2V MANIFOLD BODY - PIPE TO FLANGE (T-TYPE)_GA
MATERIAL: SS 316L		PART NO.: BL2VM-PFT
DRAWN: TDK CHK'D: SSS APPV'D: MDK	SIGN: DATE: 20/01/2023	QTY: 01 DATE ISSUED: 06/11/2023 WEIGHT: NA REV.: 01 SCALE: 1:2
		A3 SHEET 1 OF 2

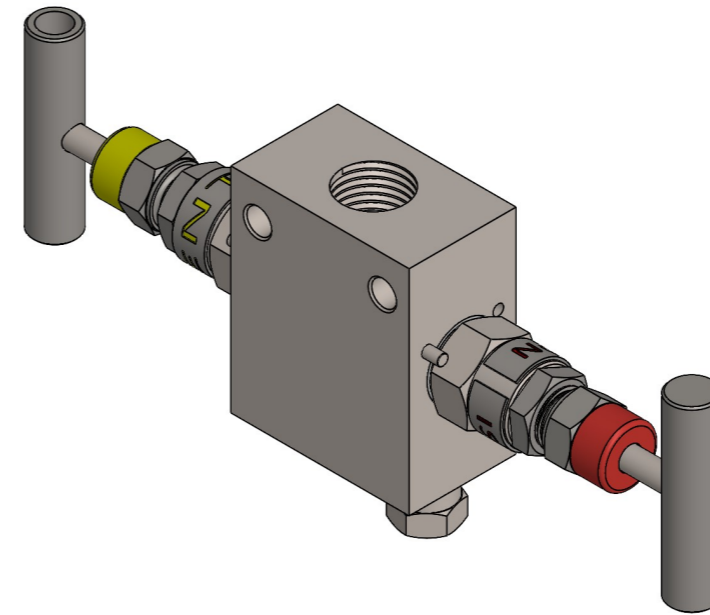
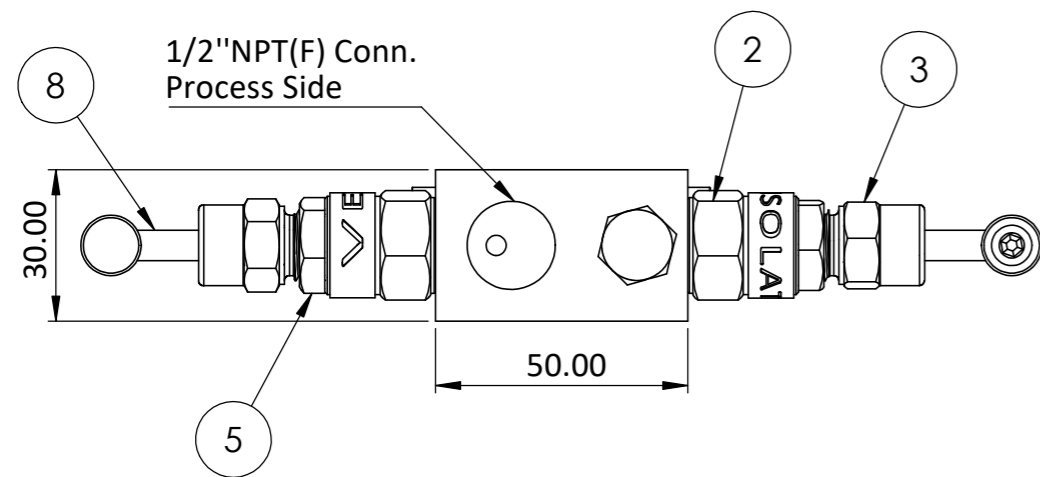
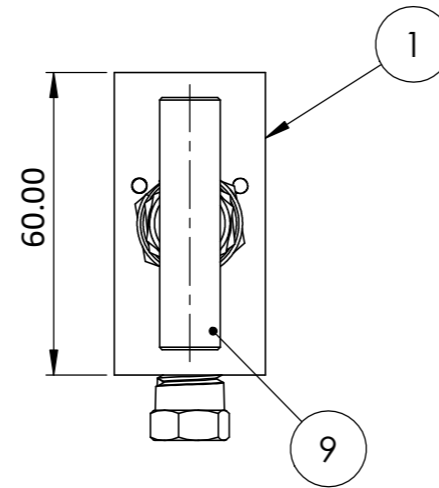
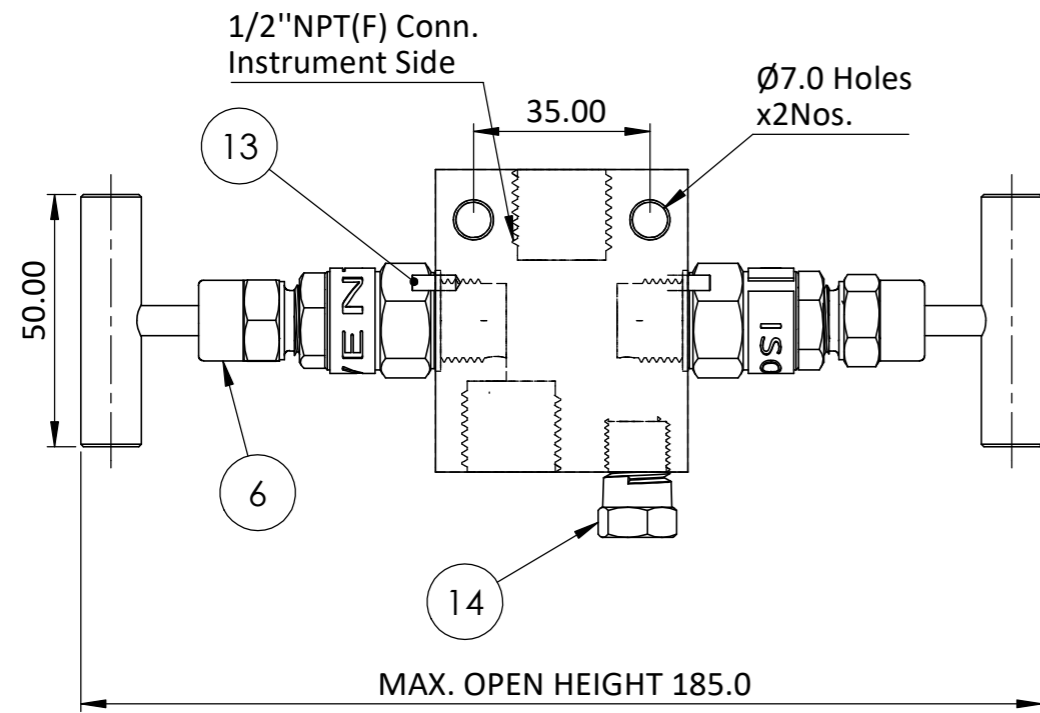


Item No.	Part Description	Mtrl	QTY.
1	2VM-PPR Body	SS 316	1
2	Bonnet	SS 316	2
3	Gland Nut	SS 304	2
4	Washer (Seal)	PTFE	2
5	Lock Nut	SS 304	2
6	Dust cap	PVC	2
7	Neck Plate	SS 304	2
8	Stem (Std)	SS 316	2
9	Handle (Std)	SS 304	2
10	Needle Tip	SS 316	2
11	Grub Screw	SS 304	2
12	SS Washer	SS 316	2
13	Lock pin	SS 304	2
14	Drain Plug 1/4" NPT	SS 316	1

ALL DIMENSIONS ARE IN MM
DEBURR & BREAK SHARP EDGES

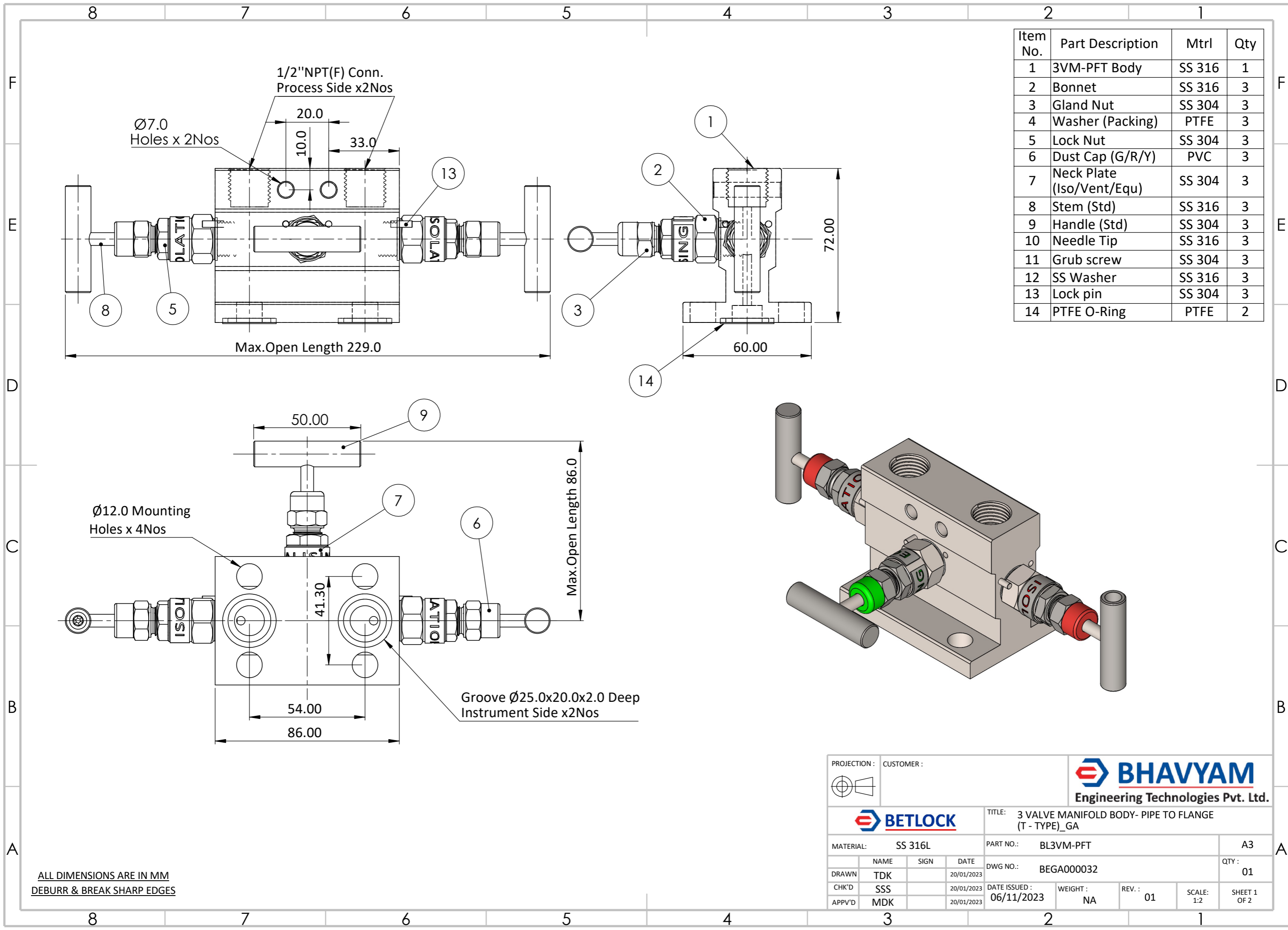
PROJECTION :	CUSTOMER :														
		TITLE: 2 VALVE MANIFOLD BODY- PIPE TO PIPE (REMOTE)_GA													
MATERIAL: SS 316		PART NO.: BL2VM-PPR	A3												
<table border="1"> <tr> <th>NAME</th> <th>SIGN</th> <th>DATE</th> </tr> <tr> <td>DRAWN TDK</td> <td></td> <td>20/01/2023</td> </tr> <tr> <td>CHK'D SSS</td> <td></td> <td>20/01/2023</td> </tr> <tr> <td>APPV'D MDK</td> <td></td> <td>20/01/2023</td> </tr> </table>	NAME	SIGN	DATE	DRAWN TDK		20/01/2023	CHK'D SSS		20/01/2023	APPV'D MDK		20/01/2023	DWG NO.: BEGA000004		QTY : 01
NAME	SIGN	DATE													
DRAWN TDK		20/01/2023													
CHK'D SSS		20/01/2023													
APPV'D MDK		20/01/2023													
		DATE ISSUED : 06/11/2023	WEIGHT : NA REV. : 02 SCALE: 1:2 SHEET 1 OF 1												

Item No.	Part Description	Mtrl	QTY.
1	2VM-PPR-2 Body	SS 316	1
2	Bonnet	SS 316	2
3	Gland Nut	SS 304	2
4	Washer (Seal)	PTFE	2
5	Lock Nut	SS 304	2
6	Dust cap	PVC	2
7	Neck Plate	SS 304	2
8	Stem (Std)	SS 316	2
9	Handle (Std)	SS 304	2
10	Needle Tip	SS 316	2
11	Grub Screw	SS 304	2
12	SS Washer	SS 316	2
13	Lock pin	SS 304	2
14	Drain Plug 1/4" NPT	SS 316	1



ALL DIMENSIONS ARE IN MM
DEBURR & BREAK SHARP EDGES

PROJECTION :	CUSTOMER :		
		TITLE: 2 VALVE MANIFOLD BODY- PIPE TO PIPE (REMOTE)-2_GA	
MATERIAL: SS 316		PART NO.: M26-PAS2V	A3
DRAWN	NAME TDK	SIGN	DATE 20/01/2023
CHK'D	SSS	DATE ISSUED :	BEGA000011
APPV'D	MDK	06/11/2023	QTY : 01
		WEIGHT : NA	REV. : 01
		SCALE: 1:2	SHEET 1 OF 2

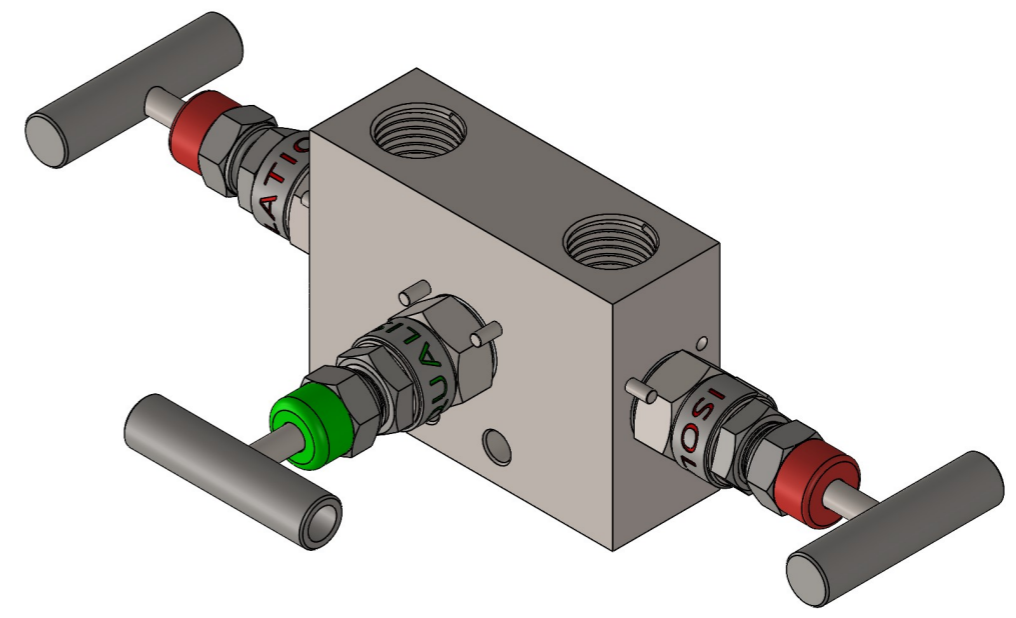
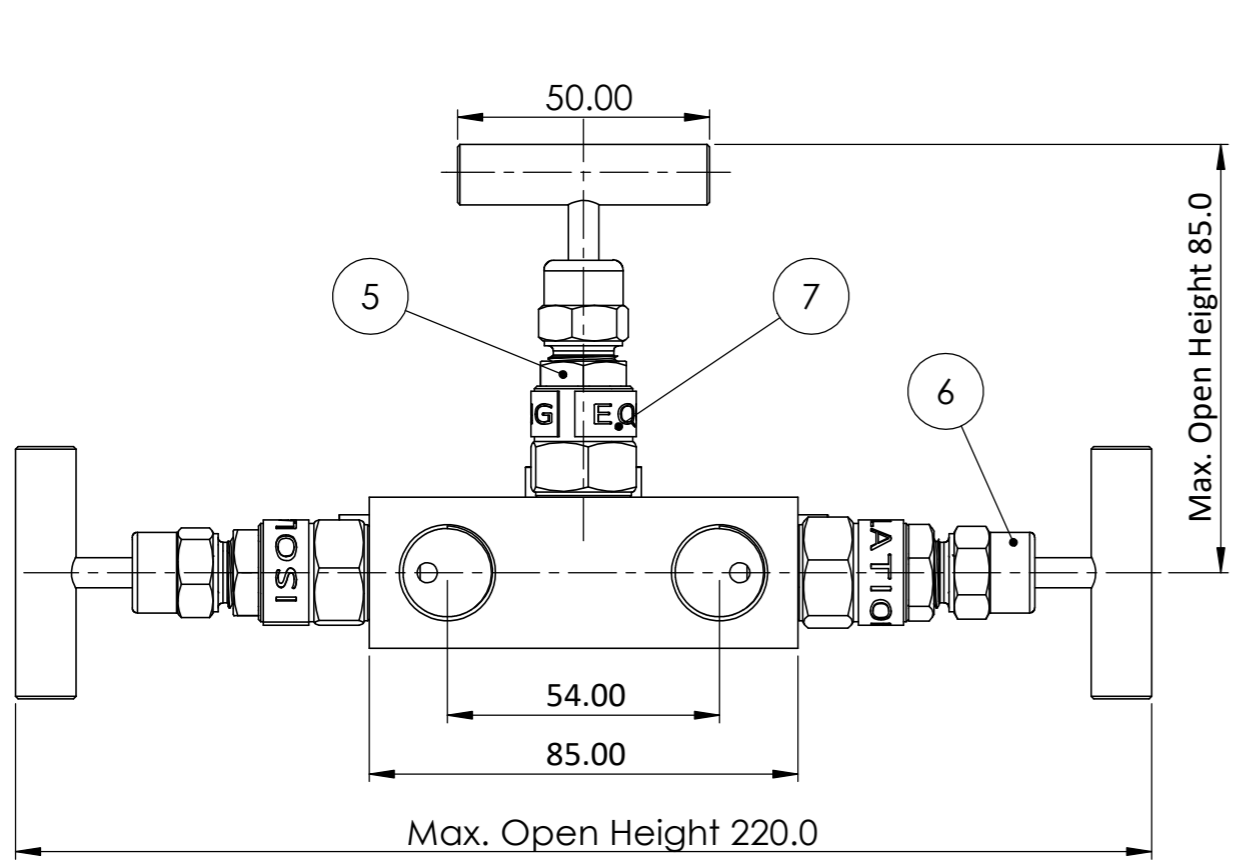
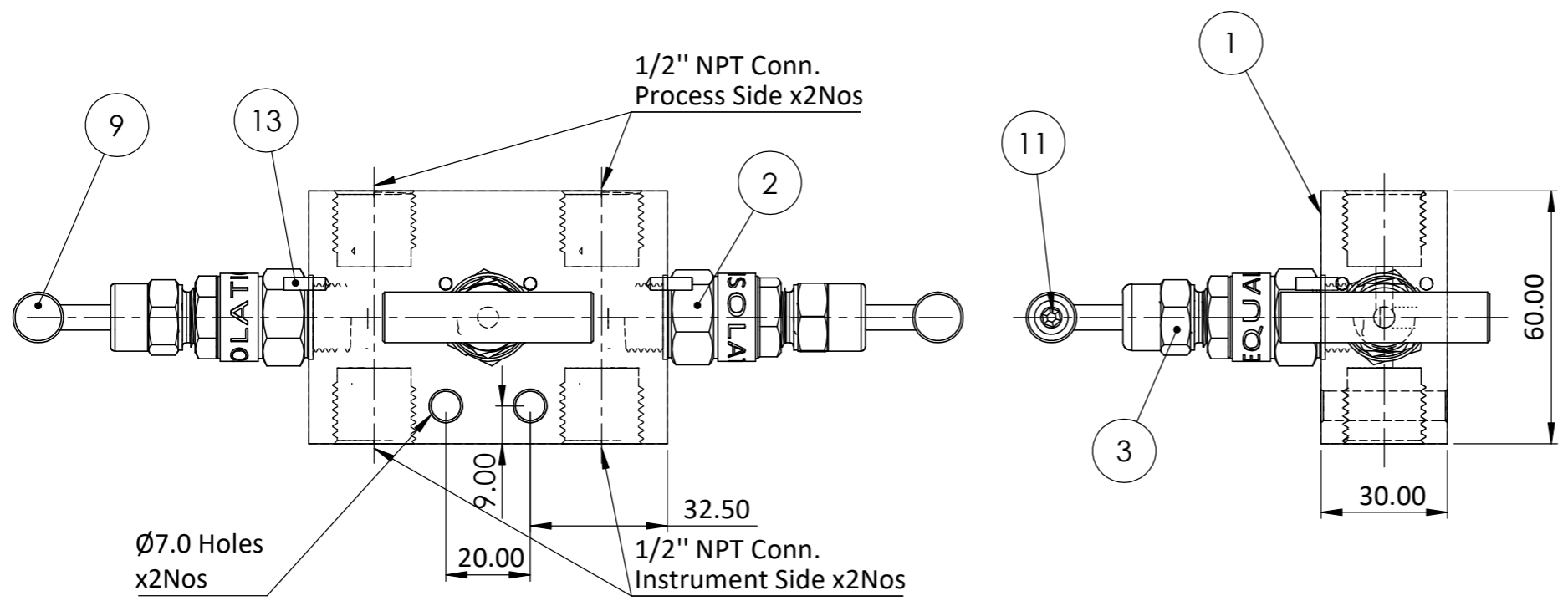


Item No.	Part Description	Mtrl	Qty
1	3VM-PFT Body	SS 316	1
2	Bonnet	SS 316	3
3	Gland Nut	SS 304	3
4	Washer (Packing)	PTFE	3
5	Lock Nut	SS 304	3
6	Dust Cap (G/R/Y)	PVC	3
7	Neck Plate (Iso/Vent/Equ)	SS 304	3
8	Stem (Std)	SS 316	3
9	Handle (Std)	SS 304	3
10	Needle Tip	SS 316	3
11	Grub screw	SS 304	3
12	SS Washer	SS 316	3
13	Lock pin	SS 304	3
14	PTFE O-Ring	PTFE	2

ALL DIMENSIONS ARE IN MM
DEBURR & BREAK SHARP EDGES

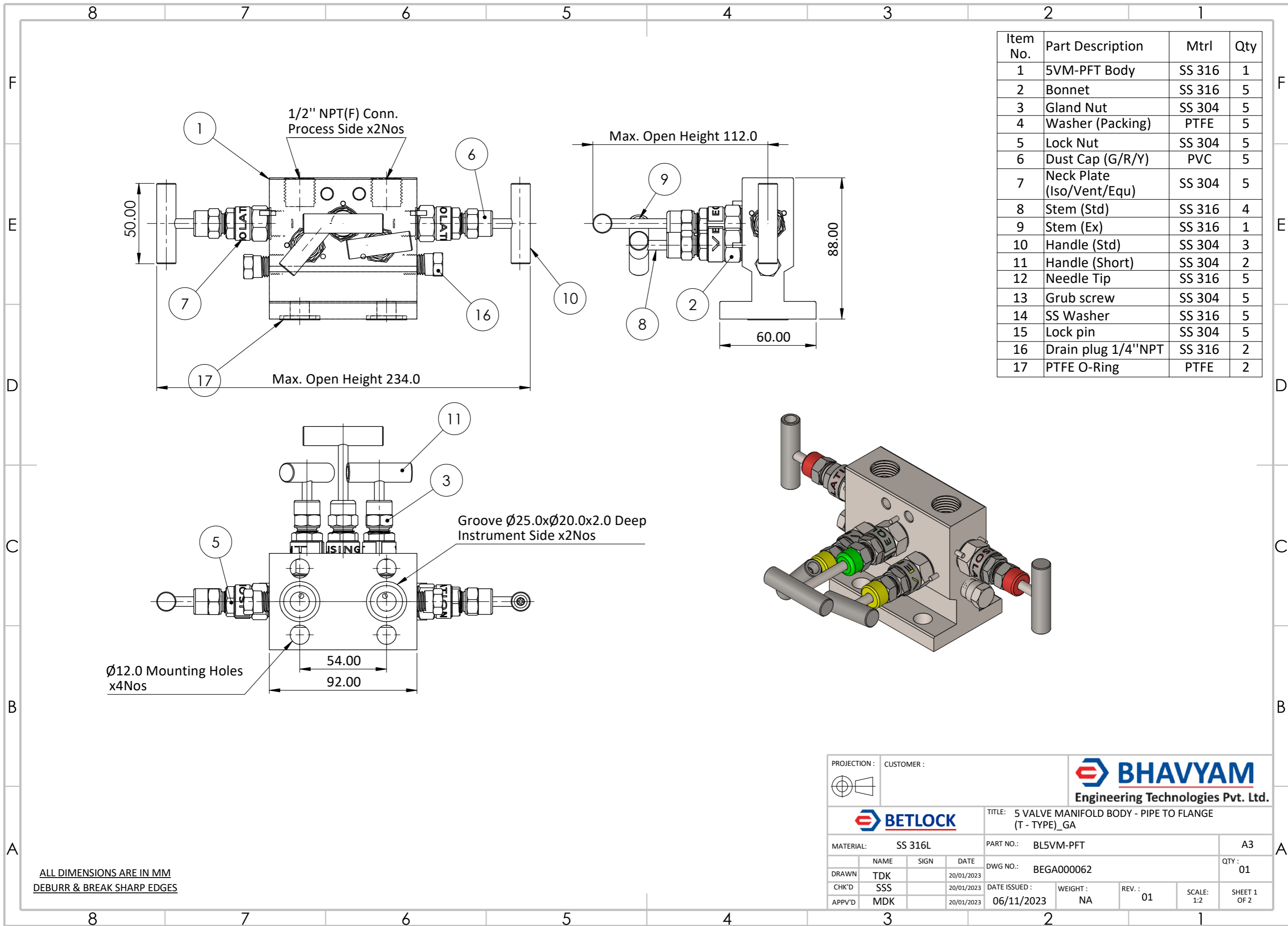
PROJECTION :	CUSTOMER :		
		TITLE: 3 VALVE MANIFOLD BODY- PIPE TO FLANGE (T - TYPE)_GA	
MATERIAL: SS 316L		PART NO.: BL3VM-PFT	A3
DRAWN	NAME: TDK	SIGN:	DATE: 20/01/2023
CHK'D	SSS	DATE ISSUED:	06/11/2023
APPV'D	MDK	WGT:	NA
		REV.:	01
		SCALE:	1:2
		QTY:	01
			SHEET 1 OF 2

Item No.	Part Description	Mtrl	Qty
1	3VM-PPR Body	SS 316	1
2	Bonnet	SS 316	3
3	Gland Nut	SS 304	3
4	Washer (Packing)	PTFE	3
5	Lock Nut	SS 304	3
6	Dust Cap (G/R/Y)	PVC	3
7	Neck Plate (Iso/Vent/Equ)	SS 304	3
8	Stem (Std)	SS 316	3
9	Handle (Std)	SS 304	3
10	Needle Tip	SS 316	3
11	Grub screw	SS 304	3
12	SS Washer	SS 316	3
13	Lock pin	SS 304	3
14	O-Ring	PTFE	2



ALL DIMENSIONS ARE IN MM
DEBURR & BREAK SHARP EDGES

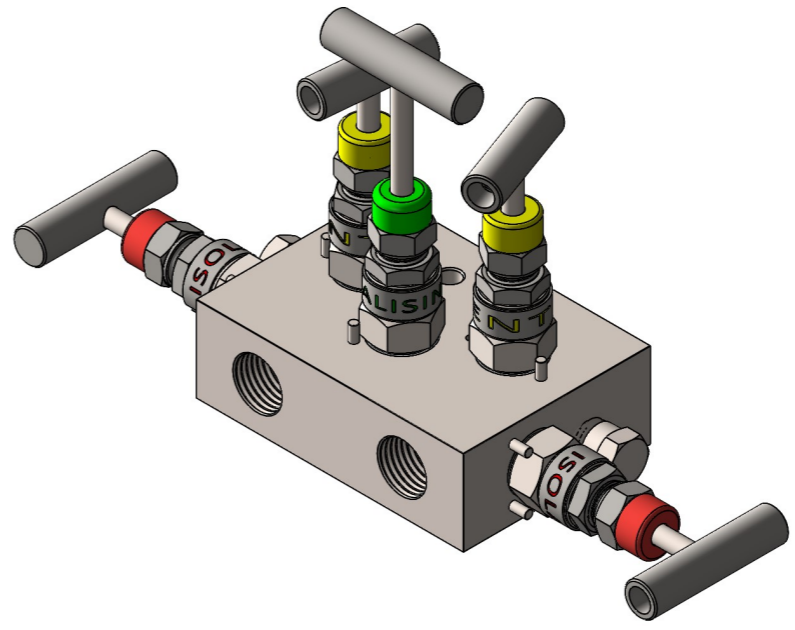
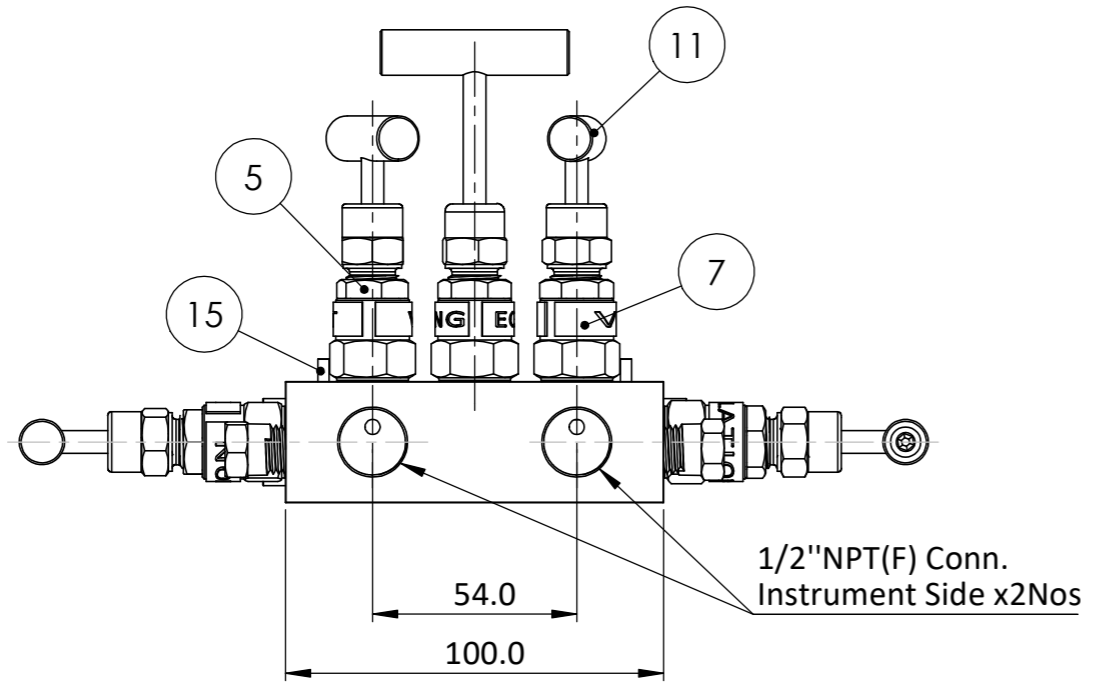
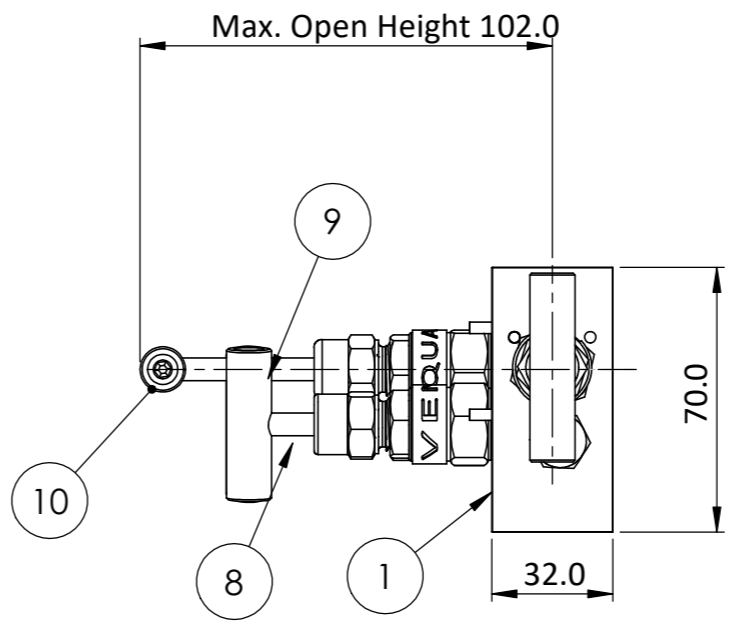
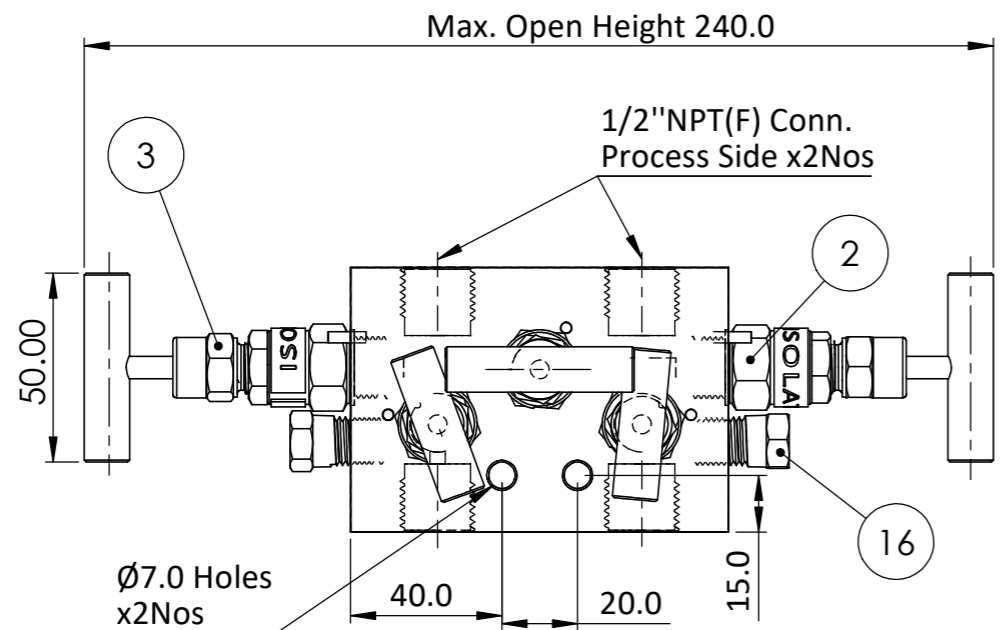
PROJECTION :	CUSTOMER :		
		TITLE: 3 VALVE MANIFOLD BODY-PIPE TO PIPE (REMOTE)_GA	
MATERIAL: SS 316		PART NO.: BL3VM-PPR	A3
DRAWN: TDK	SIGN: []	DATE: 20/01/2023	DWG NO.: BEGA000031
CHK'D: SSS		DATE ISSUED: 06/11/2023	QTY: 01
APPV'D: MDK		WEIGHT: NA	REV.: 02
		SCALE: 1:2	SHEET 1 OF 2



Item No.	Part Description	Mtrl	Qty
1	5VVM-PFT Body	SS 316	1
2	Bonnet	SS 316	5
3	Gland Nut	SS 304	5
4	Washer (Packing)	PTFE	5
5	Lock Nut	SS 304	5
6	Dust Cap (G/R/Y)	PVC	5
7	Neck Plate (Iso/Vent/Equ)	SS 304	5
8	Stem (Std)	SS 316	4
9	Stem (Ex)	SS 316	1
10	Handle (Std)	SS 304	3
11	Handle (Short)	SS 304	2
12	Needle Tip	SS 316	5
13	Grub screw	SS 304	5
14	SS Washer	SS 316	5
15	Lock pin	SS 304	5
16	Drain plug 1/4"NPT	SS 316	2
17	PTFE O-Ring	PTFE	2

ALL DIMENSIONS ARE IN MM
DEBURR & BREAK SHARP EDGES

PROJECTION :	CUSTOMER :		
		TITLE: 5 VALVE MANIFOLD BODY - PIPE TO FLANGE (T - TYPE)_GA	
MATERIAL: SS 316L		PART NO.: BL5VM-PFT	A3
DRAWN	TDK	DATE	20/01/2023
CHK'D	SSS	DATE ISSUED :	20/01/2023
APPV'D	MDK	DATE ISSUED :	06/11/2023
DWG NO.: BEGA000062		WEIGHT :	NA
REV. :		01	SCALE: 1:2
QTY :		01	SHEET 1 OF 2



Item No.	Part Description	Mtrl	Qty
1	SVM-PPR Body	SS 316	1
2	Bonnet	SS 316	5
3	Gland Nut	SS 304	5
4	Washer (Packing)	PTFE	5
5	Lock Nut	SS 304	5
6	Dust Cap (G/R/Y)	PVC	5
7	Neck Plate (Iso/Vent/Equ)	SS 304	5
8	Stem (Std)	SS 316	4
9	Stem (Ex)	SS 316	1
10	Handle (Std)	SS 304	3
11	Handle (Short)	SS 304	2
12	Needle Tip	SS 316	5
13	Grub screw	SS 304	5
14	SS Washer	SS 316	5
15	Lock pin	SS 304	5
16	Drain plug 1/4"NPT	SS 316	2

ALL DIMENSIONS ARE IN MM
DEBURR & BREAK SHARP EDGES

PROJECTION :				 Engineering Technologies Pvt. Ltd.		
			TITLE: 5 VALVE MANIFOLD BODY - PIPE TO PIPE (REMOTE)_GA			
MATERIAL: SS 316			PART NO.: BL5VM-PPR		A3	
DRAWN	TDK	20/01/2023	DWG NO.: BEGA000061		QTY : 01	
CHK'D	SSS	20/01/2023	DATE ISSUED :	WEIGHT :	REV. :	
APPV'D	MDK	20/01/2023	06/11/2023	NA	02	
			SCALE: 1:2	SHEET 1 OF 2		